



KITCHEN RATS



Stephanie Thurston, Jenn Thom Santelli, Adriana Petrova,
& Cheryl MacKenzie May 1, 2003

INTRO:

- Examined 5 key job positions, kitchen safety and kitchen organization
- Conducted walkthrough assessment and photographic and video analysis
- Used postural analysis and force measurement tools to assess level of risk

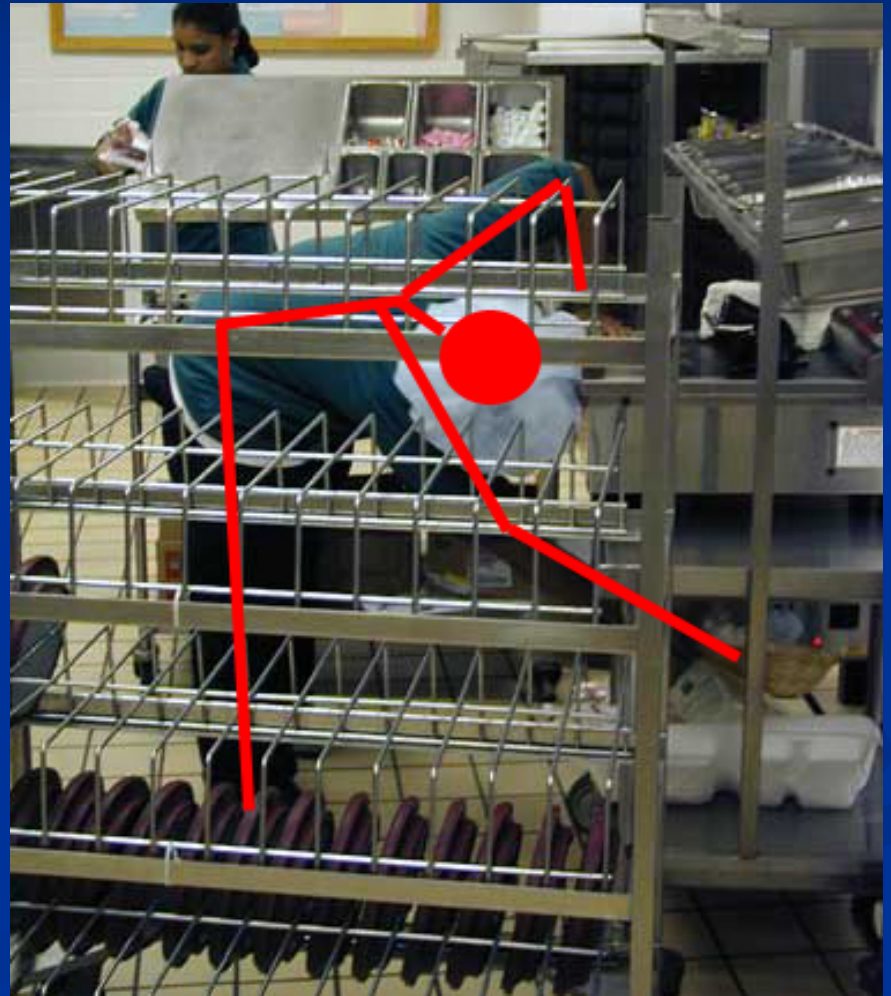
NUTRITIONAL SERVICES: CHEF

Repetitive tasks by
dominant arm



TRAY ASSEMBLY PERSONNEL:

Bending to retrieve low objects



HOT/COLD FOOD PREP:

Reaching beyond ideal working range



FOOD SERVICE AIDS:

Crowded storage areas lead to improper lifting



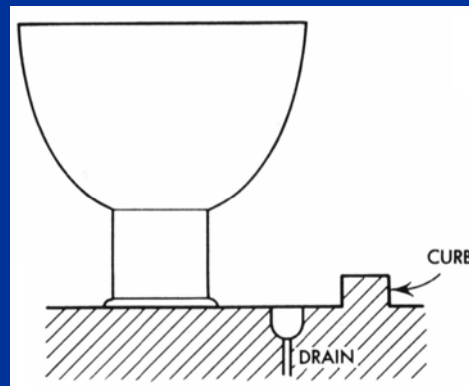
CLEANING & MAINTENANCE:

Shoulder abduction and wrist ulnar deviation occurring in routine cleaning tasks



GENERAL KITCHEN SAFETY:

Lack of drainage

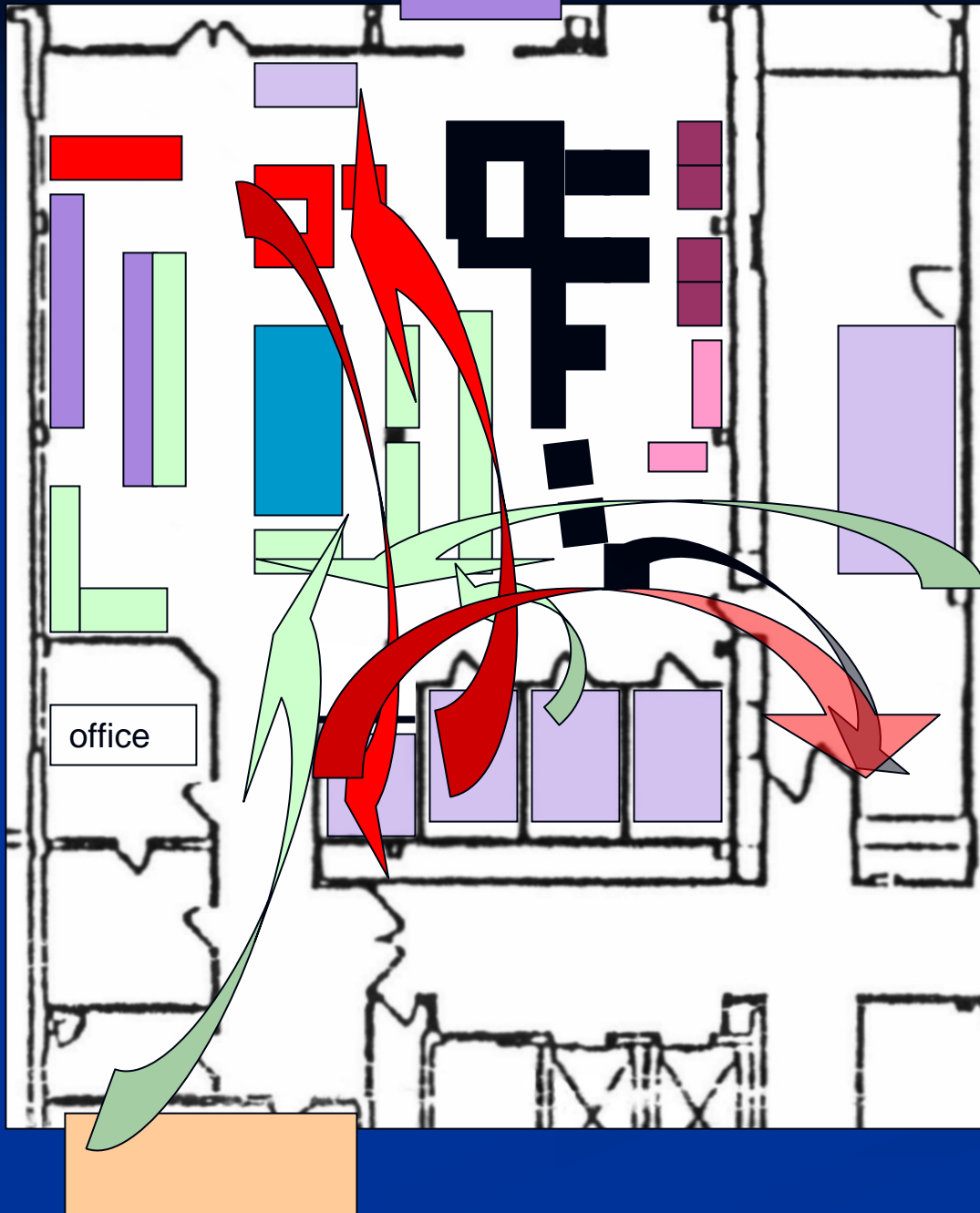


Inappropriate mat placement



Current Layout

- main cooking
- preparation
- assembly
- special foods
- beverage
- washing
- stored containers
- refrigerators
- dry storage



Current Layout

- main cooking
- preparation
- assembly
- special foods
- beverage
- washing
- stored containers
- refrigerators
- dry storage

path crossing



Current Layout

- main cooking
- preparation
- assembly
- special foods
- beverage
- washing
- stored containers
- refrigerators
- dry storage

reduce path
crossing when
supplying
preparation –

**fridge content
exchange**



Current Layout

- main cooking
- preparation
- assembly
- special foods
- beverage
- washing
- stored containers
- refrigerators
- dry storage

reduce path
crossing when
supplying
preparation –

fridge content
exchange





Proposed Layout

- main cooking
- preparation
- assembly
- special foods
- beverage
- washing
- stored containers
- refrigerators
- dry storage

reduce path crossing of cooks with diet foods preparation –

diet foods unit and assembly line position switch



- Proposed Layout**
- main cooking
 - preparation
 - assembly
 - special foods
 - beverage
 - washing
 - stored containers
 - refrigerators
 - dry storage

reduced path
crossing by

**diet foods unit and
assembly line
position switch**

**fridge content
switch**



Thanks.

